

EURO EDITION BY TWIN ANCHORS MARINE



EURO 3610

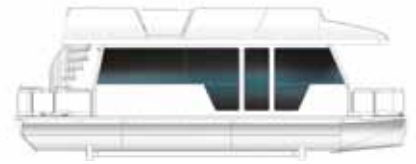
The shape of things to come

The Euro 3610 was designed to operate comfortably on the somewhat restrictive waterways of Europe. The result appeals to the discerning buyer worldwide who demands quality, comfort and good looks in a sensibly sized package. These boats combine a molded fiberglass cabin and deck structure with flush mounted structural glass. The Euro: a houseboat with yacht quality.

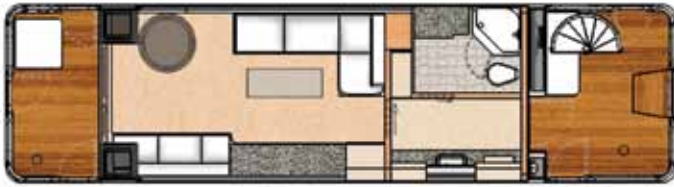


Euro Edition & optional floorplans

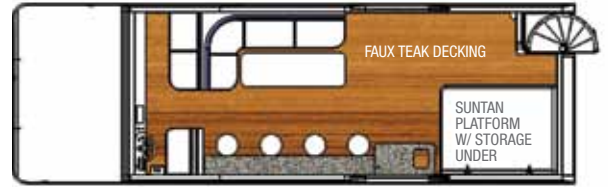
* Some options shown on floorplans



3610 - DAY BOAT



MAIN DECK



BRIDGE DECK

3610 - OVERNIGHTER



MAIN DECK



BRIDGE DECK

4412 - WEEKENDER



MAIN DECK



BRIDGE DECK

EURO 3610

SPECIFICATIONS	Metric	Imperial
LOA	11 m	36'1"
LWL	10.68 m	35'
Beam	3 m	9' 11"
HOA	4.1 m	13'2"
Draft	0.9 m	3'
Air Draft	3.73 m	12'3"
Dry Weight	6,990 kg	15,375 lbs.
Wet Weight	7,700 kg	16,975 lbs.

TANKAGE

Fuel	400 L	110 US Gal.
Water	400 L	110 US Gal.
Holding	275 L	75 US Gal.

EURO 4412

SPECIFICATIONS	Metric	Imperial
LOA	13.5 m	44'
LWL	12.86 m	43'
Beam	3.85 m	12' 6"
HOA	4.1 m	13'2"
Draft	1.0 m	3'3"
Air Draft	3.73 m	12'3"
Dry Weight	8,545 kg	18,800 lbs.
Wet Weight	9,990 kg	20,000 lbs.

TANKAGE

Fuel	800 L	220 US Gal.
Water	400 L	110 US Gal.
Holding	1815 L	500 US Gal.

FLOTATION

Aluminum Hulls - 34" high with sealed bulkheads 5' o.c.
Re-enforced beaching plate and outboard engine pod

STRUCTURAL

5' two piece sliding door forward
Hinged glass door aft
Molded fiberglass/foam cabin sole and bridge deck
Molded fiberglass/foam wall panels and bulkheads
Structural, flush mounted glass
*Faux teak, non-skid decks, fore, aft and bridge
Euro Graphic Package

RAILS & LADDERS

Aluminum railings and spiral access ladder to bridge
*Stainless steel rails and spiral access ladder to bridge
Stainless steel boarding ladder - forward
Boarding ramp
Bimini top

* Denotes Optional Equipment

POWER

3610: *Outboard, 90HP - 150HP
4412: * Outboard 90HP - 150HP
4412: *Twin Outboard 60 - 150 HP

MECHANICAL

Tachometer, hour meter, oil pressure, trim and fuel gauge
Hydraulic steering
MMC electronic controls
* Dual station controls
* Anchor winch, chain locker and bow roller
* Electric bow thruster

GENERATOR

8.0 KW - 110v Westerbeke (with sound box under
or 6.4 KW - 220v Westerbeke (with sound box under)

HEATING AND COOLING

13,500 BTU air conditioner - ducted
* Diesel forced air furnace - ducted

PLUMBING FEATURES

Hot water heater 22L (6 gal)
Holding tank pump-out(s)
Stainless sink in galley
Stainless vanity sink
Designer faucets
Porcelain macerator head(s)
Neo-angle shower(s)
5.8 GMP variable speed pump
2.8 GPM onboard water pump
Aft deck shower

ELECTRICAL FEATURES

30 Amp/110v Shore power with 25' cord
or 15 Amp/220v Shore power with 25' cord
220v /110v and 12v panels
2 - Start batteries, 12 volt
4 - Cabin batteries, 6 volt deep cycle
LED lighting throughout
3000 Watt True-Sine inverter
*E-plex digital control and monitoring system

APPLIANCES

8 cu.ft. 2 way propane refrigerator (2-door)
2 burner cooktop
Microwave oven
Dishwasher
Wine cooler
10 US Gal. hot water tank

AUDIO/VIDEO SYSTEMS

Wall mounted 32" LCD TV - Nuvo Simplese system with 4 zones
Two i-pod docks - salon/bridge
Blu-ray player - salon
Satellite radios - salon/bridge deck
Sirius Satellite - two systems selection from salon and bridge
NUVO 4 zone system - salon / fore deck / aft deck / bridge deck
6 Speakers - 2 salon, 2 aft deck and 2 bridge deck
Satellite ready - prewired for satellite dish installation

** Denotes Optional Equipment*





CABIN FINISHING / FURNISHINGS

SALON: Padded vinyl wall paneling
Padded vinyl head liner throughout
Solid hardwood moldings
Sectional sofa with storage under
Table - round c/w four chairs
Coffee table
Curtains on patio doors
Pleated shades and valances throughout

STATE ROOM 3610 ON / 4412 WE
Island bed with storage under
Night tables and storage lockers

ENSUITE 4412 WE Macerator Head
Under mount vanity stainless sink
Shower - molded fiberglass
Single lever faucets

CUDDY 4412 WE Lower guest state room with private access
Full double bed
Night tables and storage lockers

BRIDGE DECK: Custom solid surface wetbar, bar sink
Bar fridge and four fixed bar stools
Coffee table - rectangular
Helm seat - fixed suntan platform

CABINETS & MILLWORK: Hardwood cabinet doors and drawer fronts, European hinges, Baltic birch drawers with positive latching hardware
solid surface countertops, entertainment center cabinet, hardwood moldings throughout

FLOORING: Designer series vinyl or carpet flooring

SAFETY

Navigation lights
Docking lights
Ships bell
Sounding horn
Compass - 4" Ritchie
Propane and CO detectors

* VHF Radio
* Chart Plotter
* GPS
* Depth Sounder

* Denotes Optional Equipment



675 Old Town Road, PO Box 318
Sicamous, BC Canada V0E 2V0

TOLL FREE 1.800.558.0881
www.twinanchorsmfg.com

find us on

